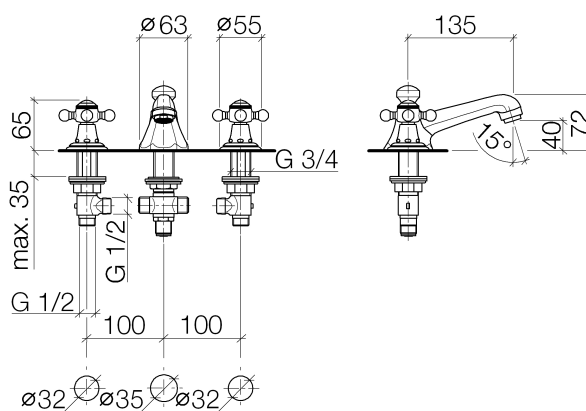




Product specifications

- **135 mm projection**
- M 24 x 1 aerator – male thread
- height of mixer 70 mm
- height up to aerator 40 mm
- deck valves with 2x xControl ceramic head part 1/2"
- 2x 1/2" x 1/2" x 300 mm screw-in high pressure hose
- compression joints
- **1 1/4" pop-up waste**
- Max. flow 7 l/min
- lead-free

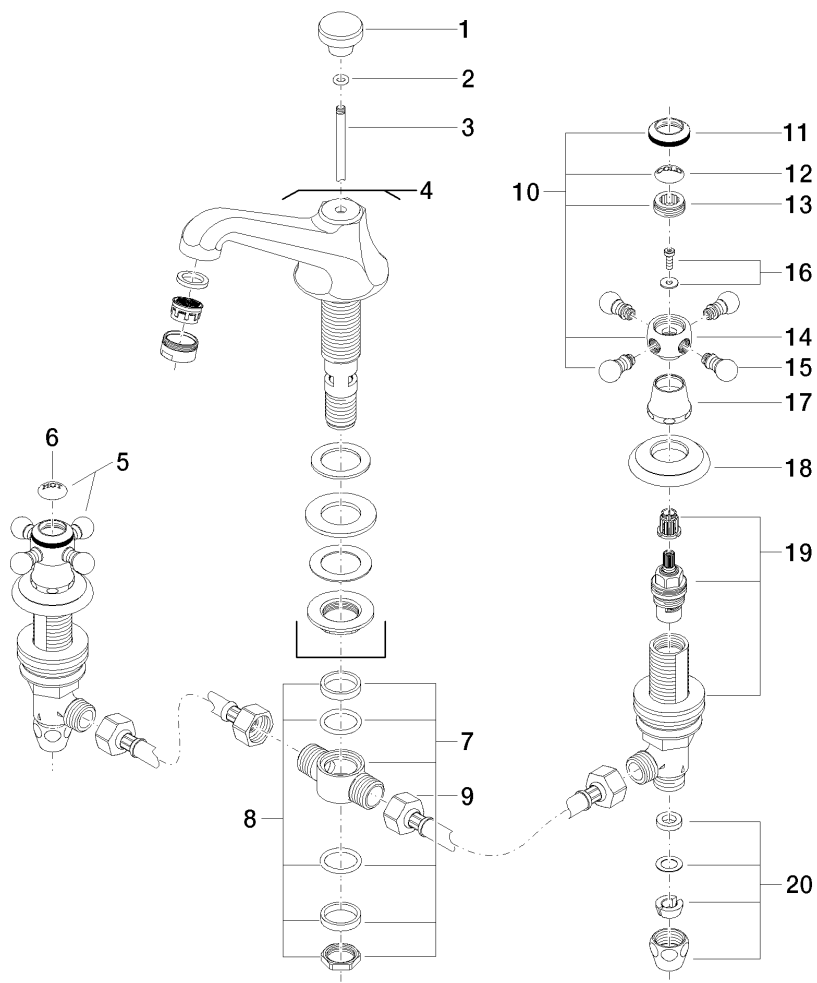
For narrow pedestals or trap covers, please order pressure hoses 12 507 970 90.



Surfaces

- chrome 20700360-00
- platinum matt 20700360-06
- platinum 20700360-08
- Durabrass 20700360-09

Exploded assembly drawing



21 ————— Ablaufgarnitur 04.11.01.001.00.FF

Order quantity

No.	Article number	Name	Installation quantity
1	092036030ff	handle	1
2	09141006290	seal	1
3	093109004ff	pull-rod	1
4	13700380ff	spout	1
5	04203600207ff	handle (hot)	1
6	09260101190	accessories	1
7	0417110201090	distributor	1
8	9023100120090	gasket kit	1
9	0430040960090	hose	2
10	04203600206ff	handle (cold)	1
11	092036005ff	handle	2
12	09260101090	accessories	1
13	09208300690	handle	2
14	092036002ff	handle	2
15	092036004ff	handle	8
16	0430300290090	fixing set	2
17	092102055ff	cover	2
18	092735001ff	rosette	2
19	9017110405190	side panel	2
20	04233004000ff	threaded connector	2
21	04110100100ff	pop-up waste	1

Flow rate chart

