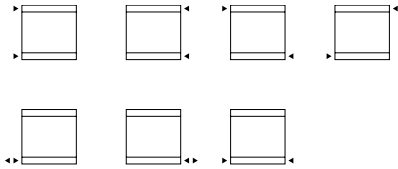
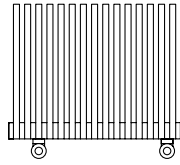


Vision

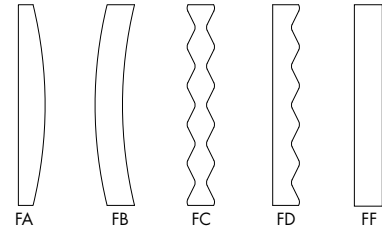
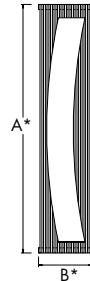
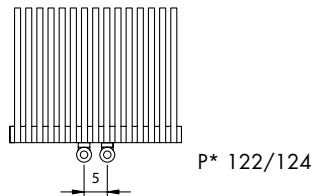
[X] attacco standard
standard connection
raccord standard
standard Anschluss
conexión estándar



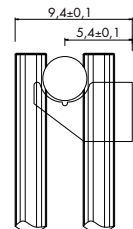
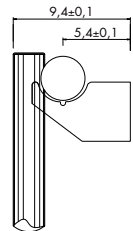
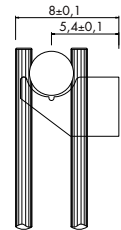
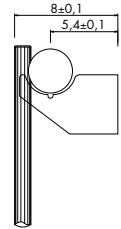
[B] attacco speciale
special connection
raccord spéciale
speziell Anschluss
conexión especial



[B5] attacco interasse 5 cm
pipe centres 5 cm
raccords 5 cm
5 cm Achsabstand Anschluss
conexión entre ejes: 5 cm.



A* cm	inches	B* cm	inches	l* cm	inches	l* cm	inches	art*	L*	BTU Δt 50°	watt Δt 50°
Vision 13 S											
170.0	66.9	44.0	17.3	53.0	20.9	166.0	65.4	VS13000S170018B	3.3	3 055	896
170.0	66.9	51.2	20.2	60.2	23.7	166.0	65.4	VS13000S170021B	3.9	3 567	1 046
170.0	66.9	58.4	23.0	67.4	26.5	166.0	65.4	VS13000S170024B	4.5	4 075	1 195
170.0	66.9	65.6	25.8	74.6	29.4	166.0	65.4	VS13000S170027B	5.0	4 586	1 345
200.0	78.7	44.0	17.3	53.0	20.9	196.0	77.2	VS13000S200018B	3.8	3 546	1 040
200.0	78.7	51.2	20.2	60.2	23.7	196.0	77.2	VS13000S200021B	4.5	4 140	1 214
200.0	78.7	58.4	23.0	67.4	26.5	196.0	77.2	VS13000S200024B	5.1	4 730	1 387
200.0	78.7	65.6	25.8	74.6	29.4	196.0	77.2	VS13000S200027B	5.7	5 323	1 561
Vision 13 D											
170.0	66.9	44.0	17.3	53.0	20.9	166.0	65.4	VS13000D170018B	6.0	4 586	1 345
170.0	66.9	51.2	20.2	60.2	23.7	166.0	65.4	VS13000D170021B	7.0	5 350	1 569
170.0	66.9	58.4	23.0	67.4	26.5	166.0	65.4	VS13000D170024B	8.0	6 114	1 793
170.0	66.9	65.6	25.8	74.6	29.4	166.0	65.4	VS13000D170027B	9.0	6 878	2 017
200.0	78.7	44.0	17.3	53.0	20.9	196.0	77.2	VS13000D200018B	6.9	5 309	1 557
200.0	78.7	51.2	20.2	60.2	23.7	196.0	77.2	VS13000D200021B	8.1	6 193	1 816
200.0	78.7	58.4	23.0	67.4	26.5	196.0	77.2	VS13000D200024B	9.2	7 079	2 076
200.0	78.7	65.6	25.8	74.6	29.4	196.0	77.2	VS13000D200027B	10.4	7 962	2 335
Vision 25 S											
170.0	66.9	44.0	17.3	53.0	20.9	166.0	65.4	VS25000S170012B	8.8	3 110	912
170.0	66.9	51.2	20.2	60.2	23.7	166.0	65.4	VS25000S170014B	10.3	3 628	1 064
170.0	66.9	58.4	23.0	67.4	26.5	166.0	65.4	VS25000S170016B	11.7	4 147	1 216
170.0	66.9	65.6	25.8	74.6	29.4	166.0	65.4	VS25000S170018B	13.2	4 665	1 368
200.0	78.7	44.0	17.3	53.0	20.9	196.0	77.2	VS25000S200012B	10.2	3 615	1 060
200.0	78.7	51.2	20.2	60.2	23.7	196.0	77.2	VS25000S200014B	11.9	4 215	1 236
200.0	78.7	58.4	23.0	67.4	26.5	196.0	77.2	VS25000S200016B	13.6	4 818	1 413
200.0	78.7	65.6	25.8	74.6	29.4	196.0	77.2	VS25000S200018B	15.4	5 418	1 589
Vision 25 D											
170.0	66.9	44.0	17.3	53.0	20.9	166.0	65.4	VS25000D170012B	16.9	4 794	1 406
170.0	66.9	51.2	20.2	60.2	23.7	166.0	65.4	VS25000D170014B	19.7	5 596	1 641
170.0	66.9	58.4	23.0	67.4	26.5	166.0	65.4	VS25000D170016B	22.5	6 394	1 875
170.0	66.9	65.6	25.8	74.6	29.4	166.0	65.4	VS25000D170018B	25.4	7 195	2 110
200.0	78.7	44.0	17.3	53.0	20.9	196.0	77.2	VS25000D200012B	19.8	5 497	1 612
200.0	78.7	51.2	20.2	60.2	23.7	196.0	77.2	VS25000D200014B	23.1	6 411	1 880
200.0	78.7	58.4	23.0	67.4	26.5	196.0	77.2	VS25000D200016B	26.4	7 328	2 149
200.0	78.7	65.6	25.8	74.6	29.4	196.0	77.2	VS25000D200018B	29.7	8 242	2 417



A* = altezza / height / hauteur / Höhe / alto B* = larghezza / width / longueur / Breite / ancho art* = articolo / model / modèle / Artikel / artículo P* = pagina / page / page / Seite / página
 l* = interasse / pipe centres / distance entre départ et retour / Achsabstand / distancia entre las conexiones
 L* = contenuto d'acqua per elemento / Water content for each element / Contenu d'eau pour chaque élément / Wassergehalt für Element / contenido de agua para cada elemento

Kcal = Watt x 0.860
 BTU = Watt x 3.413

Watt Δt 60° = Watt Δt 50° x 1.259
 Watt Δt 40° = Watt Δt 50° x 0.754
 Watt Δt 30° = Watt Δt 50° x 0.525
 Watt Δt 20° = Watt Δt 50° x 0.314

p max = 10.0 bar

Colori/ colours / couleurs / Farbe / colores

[BIAN] B standard
 T + 10%
 S + 20%
 [RAL] S + 20%
 RAL non inclusi in tabella
 special Ral colours
 couleurs Ral spéciales
 RAL Farbe nicht in der Tabelle inbegriffen
 colores RAL especiales

Ulteriori dettagli
 Further details
 Ulérieures détails
 Weitere Einzelheiten
 Otros detalles



P* 120